

# mcr VB/Error Handler - Tracer Profiler

## (v1.01)

[Read this](#) if you're a registered user of 'VB/Error Handler' and/or 'VB/Tracer-Profiler'.

### [Overview](#)

[Select a file \(project, handler, tracer, profiler\)](#)

[Analyze Project](#)

[Backup Message Box](#)

[View Handler](#)

[View Tracer](#)

[View Profiler](#)

[Online Traced Module](#)

[Revision History](#)

[New Features](#)

[Installation](#)

[Technical Support](#)

[How to register 'mcr VB/Error Handler - Tracer Profiler'](#)

[License Agreement](#)

[Distribution Note](#)

[Acknowledgement](#)

[Other products](#)

# Overview

'mcr VB/Error Handler - Tracer Profiler' add/remove :

- 1) error's management in a VB project;
- 2) tracer/profiler in a VB project.

'mcr VB/Error Handler - Tracer Profiler' have two versions in the same product :

- 1) a version called VBEHTP16 can handle VB 3.0 and VB 4.0 (16-Bit) project under Windows 3.1x;
- 2) a version called VBEHTP32 can handle VB 3.0 and VB 4.0 (16/32 Bit) project under Windows 95.

'mcr VB/Error Handler - Tracer Profiler' use an another approach to minimize the size of the .EXE.  
It use an external file which contains all routines founden in all files (forms, modules, classes) of your project.

A basic module and a form module are added in your project, these modules are :

- 1) VBEHTP30.BAS for VB 3.0 and VBEHTP40.BAS for VB 4.0 (16/32 Bit);
- 2) VBEHTP30.FRM for VB 3.0 and VBEHTP40.FRM for VB 4.0 (16/32 Bit).

The form module show the online traced procedure. However, a trapped error is displayed in a special Message Box (8 languages).

I hope that 'mcr VB/Error Handler - Tracer Profiler' will be a great advantage for you and for your application.

'mcr VB/Error Handler - Tracer Profiler' works ONLY with forms, modules, classes and projects SAVED IN TEXT MODE.

# Revision History

See also : [New Features](#)

Version	Comments
1.01	Correct a problem with existing {Exit Sub   Exit Function}.
1.00	Initial release of the 'mcr VB/Error Handler - Tracer Profiler'.

# New Features

See also : [Revision History](#)

Version	Comments
1.01	Added sample files for Handler, Tracer, Profiler.
1.00	Initial release of the 'mcr VB/Error Handler - Tracer Profiler'.

# Installation

---

The following items are discussed :

- 1) If you're working with 'mcr VB/Error Handler - Tracer Profiler' for VB 3.0 under Windows 3.1x;
- 2) If you're working with 'mcr VB/Error Handler - Tracer Profiler' for VB 4.0 (16-Bit) under Windows 3.1x;
- 3) If you're working with 'mcr VB/Error Handler - Tracer Profiler' for VB 4.0 (32-Bit) under Windows 95.

## 1) If you're working with 'mcr VB/Error Handler - Tracer Profiler' for VB 3.0 under Windows 3.1x

You must unZIP all files in the same directory and perform the supplementary copy below.

### Demonstration version :

The files MCVB3016.DLL should be copied in your WINDOWS\SYSTEM directory.

### Registered version :

The files MCVB3016.DLL should be copied in your WINDOWS\SYSTEM directory.  
The file MCVBEHTP.LIC should be copied in your WINDOWS directory.

### Distribution note:

When you create and distribute applications that use 'mcr VB/Error Handler - Tracer Profiler', you must install :

- 1) The files [\[Application\].-HD](#), [\[Application\].-PF](#), [\[Application\].-TR](#) and [MCVBEHTP.V??](#) must be installed in the installation directory of your application;
- 2) The file [MCVB3016.DLL](#) must be installed in the customer's Microsoft Windows [WINDOWS\SYSTEM](#) subdirectory

The setup kit included with Visual Basic provides tools that help you write setup programs that install your applications correctly.

*You are not allowed to distribute 'MCVBEHTP.LIC' file with any application that you distribute.*

## 2) If you're working with 'mcr VB/Error Handler - Tracer Profiler' for VB 4.0 (16-Bit) under Windows 3.1x

You must unZIP all files in the same directory and perform the supplementary copy below.

### Demonstration version :

The files MCVB4016.DLL should be copied in your WINDOWS\SYSTEM directory.

### Registered version :

The files MCVB4016.DLL should be copied in your WINDOWS\SYSTEM directory.  
The file MCVBEHTP.LIC should be copied in your WINDOWS directory.

### Distribution note:

When you create and distribute applications that use 'mcr VB/Error Handler - Tracer Profiler', you must install :

- 1) The files [\[Application\].-HD](#), [\[Application\].-PF](#), [\[Application\].-TR](#) and [MCVBEHTP.V??](#) must be installed in the installation directory of your application;
- 2) The file [MCVB4016.DLL](#) must be installed in the customer's Microsoft Windows [WINDOWS\SYSTEM](#)

subdirectory

The setup kit included with Visual Basic provides tools that help you write setup programs that install your applications correctly.

*You are not allowed to distribute 'MCVBEHTP.LIC' file with any application that you distribute.*

### **3) If you're working with 'mcr VB/Error Handler - Tracer Profiler' for VB 4.0 (32-Bit) under Windows 95**

You must unZIP all files in the same directory and perform the supplementary copy below.

#### **Demonstration version :**

The files MCVB4032.DLL should be copied in your WIN95\SYSTEM directory.

#### **Registered version :**

The files MCVB4032.DLL should be copied in your WIN95\SYSTEM directory.  
The file MCVBEHTP.LIC should be copied in your WIN95 directory.

#### **Distribution note:**

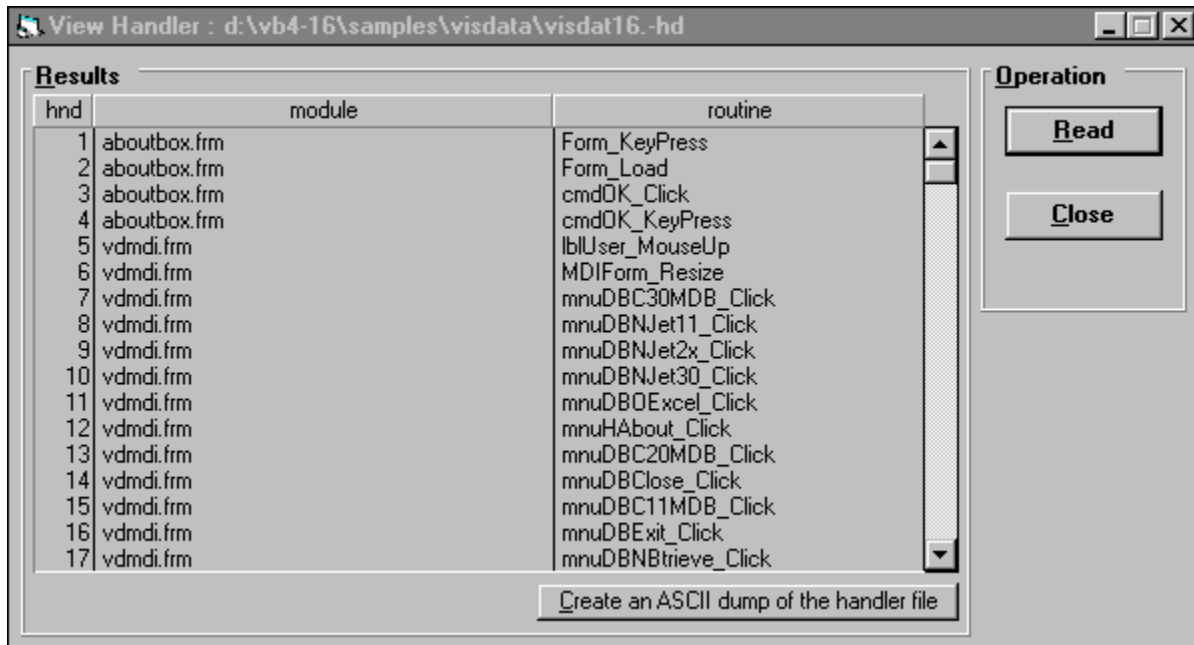
When you create and distribute applications that use 'mcr VB/Error Handler - Tracer Profiler', you must install :

- 1) The files [\[Application\].-HD](#), [\[Application\].-PF](#), [\[Application\].-TR](#) and [MCVBEHTP.V??](#) must be installed in the installation directory of your application;
- 2) The file [MCVB4032.DLL](#) must be installed in the customer's Microsoft Windows [WIN95\SYSTEM](#) subdirectory

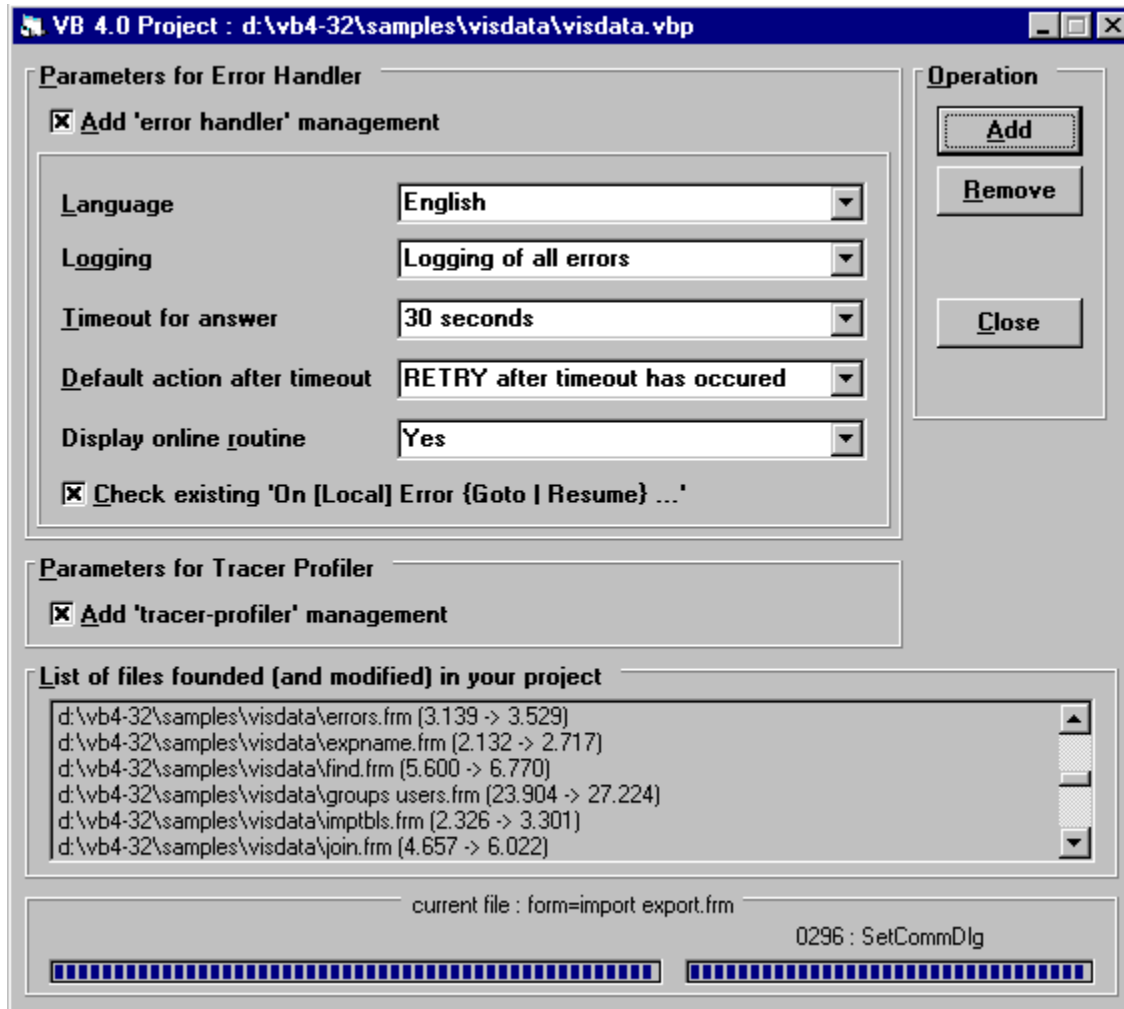
The setup kit included with Visual Basic provides tools that help you write setup programs that install your applications correctly.

*You are not allowed to distribute 'MCVBEHTP.LIC' file with any application that you distribute.*

# View Handler



# Analyze Project





# How to register 'mcr VB/Error Handler - Tracer Profiler'

The easiest way to Register 'mcr VB/Error Handler - Tracer Profiler' is through CompuServe's SWREG forum.

- 1) [GO SWREG](#)
- 2) Choose Register Shareware.
- 3.1) 'mcr VB/Error Handler - Tracer Profiler' [SWREG ID](#) is : **#4379** (**ONLY** if you're a **REGISTERED** user of 'TIME TO WIN' (16/32 Bit)).
- 3.2) 'mcr VB/Error Handler - Tracer Profiler' [SWREG ID](#) is : **#4380** (only if you're **NOT** a **REGISTERED** user of 'TIME TO WIN' (16/32 Bit)).

As soon as I receive notification of your registration (usually 1 - 3 days) I will send you out via e-Mail the latest version and a license file for one site (only if latest version is available (not currently in test)) if not you receive the license file for one site.

You also qualify to receive new versions of 'mcr VB/Error Handler - Tracer Profiler' during one year.

[The price for 'mcr VB/Error Handler - Tracer Profiler' is fixed at \\$16.00](#) (**ONLY** if you're a **REGISTERED** user of 'TIME TO WIN' (16/32 Bit)).

[The price for 'mcr VB/Error Handler - Tracer Profiler' is fixed at \\$25.00](#) (only if you're **NOT** a **REGISTERED** user of 'TIME TO WIN' (16/32 Bit)).

**If you're NOT a REGISTERED user of 'TIME TO WIN' and you register 'mcr VB/Error Handler - Tracer Profiler' at the low price (\$16.00), I can't send to you the product and I wait until that you register 'TIME TO WIN' (16/32 Bit).**

*This price is much a contribution to my works that a payment. When you register 'mcr VB/Error Handler - Tracer Profiler', you help me to develop better products and others products.*

'mcr VB/Error Handler - Tracer Profiler' is written in the following language :

## 1) For VBEHTP16

The main module is writted in Visual Basic 3.0;  
The additionnal module (DLL) is writted in VC++ 1.52c (code optimized for 80386 and maximize speed).

## 2) For VBEHTP32

The main module is writted in Visual Basic 4.0 (32-Bit);  
The additionnal module (DLL) is writted in VC++ 4.00 (code optimized for 80486 and maximize speed).

# Acknowledgement

This help has been written by using [ForeHelp](#) v1.04 from [ForeFront, Inc.](#)

# Technical Support

**Only registered users can receive support and update.**

To receive support, you must specify your registration ID (MCVBEHTP-xxx).

However, any report on any problem are the welcome.

The following information may be of help to you in streamlining your efforts to resolve any technical problems you may have with 'mcr VB/Error Handler - Tracer Profiler' product.

## **GPF?**

If you are getting a GPF (General Protection Fault), write down the information that is displayed when the error occurs. Also, make a note of what your code was doing (in general terms.)

## **ISOLATE IT**

Try to isolate the cause of the error. If at all possible, step through your code with F8 and F9. Try to find the one line of code that is causing the error.

## **SCALE IT DOWN**

If at all possible, try to reproduce the problem in a small test program that you can send in. Send your test on CompuServe.

## **CompuServe Mail:**

**Name : Michaël RENARD**  
**CIS : 100042,3646**  
**Internet : 100042.3646@compuserve.com**

# License Agreement

The 'mcr VB/Error Handler - Tracer Profiler' program and its associated DLL is not public domain software or free software.

The 'mcr VB/Error Handler - Tracer Profiler' program and its associated DLL is copyrighted, and all rights are reserved by its author: Michaël Renard.

You are licensed to use this software on a restricted number of computers. You may copy the software to facilitate your use of it on as many computers as there are licensed users specified in the 'mcr VB/Error Handler - Tracer Profiler' license file '**MCVBEHTP.LIC**'. Making copies for any other purpose violates international copyright laws.

*You are not allowed to distribute '**MCVBEHTP.LIC**' file with any application that you distribute.*

## **Disclaimer:**

This software is sold AS IS without warranty of any kind, either expressed or implied, including but not limited to the implied warranties of merchantability and fitness for a particular purpose. The authors assume no liability for any alleged or actual damages arising from the use of this software. (Some states do not allow the exclusion of implied warranties, so the exclusion may not apply to you.)

**Your use of this product indicates that you have read and agreed to these terms.**

# Distribution Note

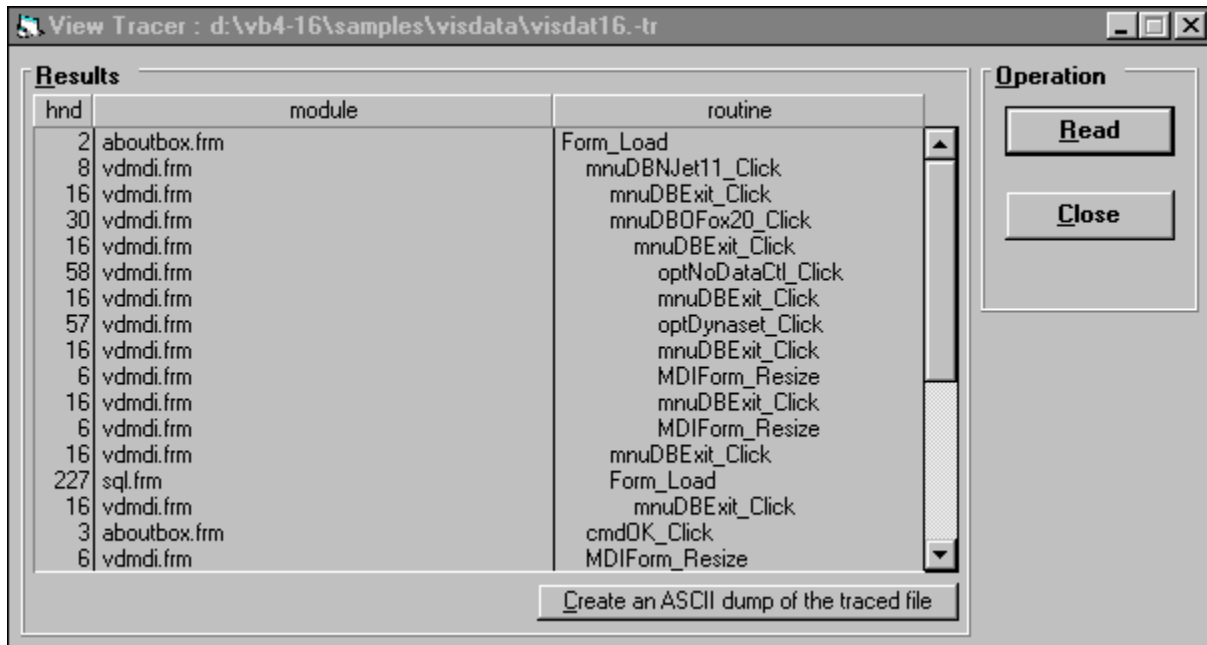
When you create and distribute applications that use 'mcr VB/Error Handler - Tracer Profiler', you must install :

- 1) The files [\[Application\].-HD](#), [\[Application\].-PF](#), [\[Application\].-TR](#) and [MCVBEHTP.V??](#) must be installed in the installation directory of your application;
- 2) The files [MCVB3016.DLL](#) or [MCVB4016.DLL](#) or [MCVB4032.DLL](#) must be installed in the customer's Microsoft Windows [WINDOWS\SYSTEM](#) or [WIN95\SYSTEM](#) subdirectory

The setup kit included with Visual Basic provides tools that help you write setup programs that install your applications correctly.

*You are not allowed to distribute 'MCVBEHTP.LIC' file with any application that you distribute.*

# View Tracer



# View Profiler

View Profiler : d:\vb4-16\samples\visdata\visdat16.-pf

**Results**

hnd	module	routine	calls	total	min	max	avg
117	dynasnap.frm	txtFieldData_Change	17	805	9	381	47
120	dynasnap.frm	cmdClose_Click	4	795	117	303	198
124	dynasnap.frm	SetScrollBar	4	205	12	77	51
15	vdmdi.frm	mnuDBC11MDB_Click	23	899	4	251	39
16	vdmdi.frm	mnuDBExit_Click	34	2015	25	427	59
18	vdmdi.frm	mnuDBNDbase3_Click	67	4101	9	549	61
2	aboutbox.frm	Form_Load	1	7889	7889	7889	7889
20	vdmdi.frm	mnuDBNFox20_Click	14	2557	11	804	182
21	vdmdi.frm	mnuDBNFox25_Click	1	109	109	109	109
227	sql.frm	Form_Load	1	491	491	491	491
228	sql.frm	Form_Unload	1	19	19	19	19
23	vdmdi.frm	mnuDBNParadox3_Click	8	478	11	136	59
243	tables.frm	lstTables_MouseDown	3	0	0	0	0
26	vdmdi.frm	mnuDBJet_Click	17	390	11	38	22
29	vdmdi.frm	mnuDBODbase4_Click	23	1359	10	469	59
3	aboutbox.frm	cmdOK_Click	1	84	84	84	84
30	vdmdi.frm	mnuDBOFox20_Click	1	1660	1660	1660	1660

Display null total calls

Create an ASCII dump of the profiled file

**Operation**

Read

Close

**Sort order**

Ascending

Descending

# Online Traced Module

**mcr VB/Error Handler - Tracer Profiler (v1.00)**

Total last same handle

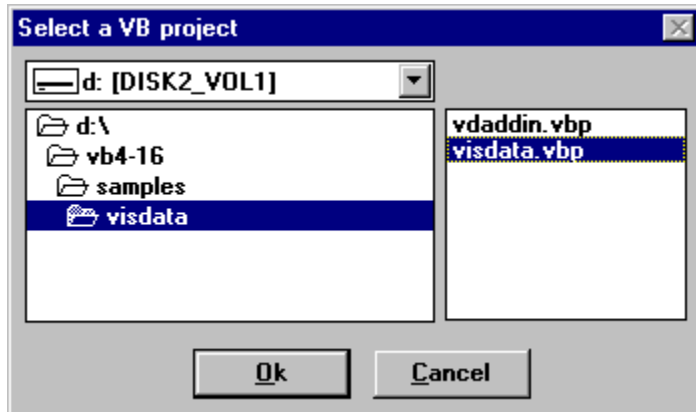
4 16

**On Top**

counter	handle	module	routine
1	0013	VISDATA.BAS	GetFieldWidth
1	0016	VISDATA.BAS	MsgBar
1	0018	VISDATA.BAS	SetHourglass
1	0026	VISDATA.BAS	vFieldVal
1	0143	DYNASNAP.FRM	txtFieldData_Change
1	0026	VISDATA.BAS	vFieldVal
1	0023	VISDATA.BAS	StripNonAscii
1	0143	DYNASNAP.FRM	txtFieldData_Change
1	0026	VISDATA.BAS	vFieldVal
1	0016	VISDATA.BAS	MsgBar



Select a file (project, handler, tracer, profiler)



## Backup Message Box



Click this check box if you want the adding or the removing of the management of errors in the selected project.

If this check box is not checked, the frame containing the parameters for the management of the error is not displayed.

Select the language that you want to use  
when an error occurs in your application.

You can select 8 languages :

French

Dutch

German

English

Italian

Spanish

Catalan

Polish

Select the type of logging. The logging save all errors in a file called [Application].LOG

You can select 2 types :

Logging of all errors

No logging

Select the time for the timeout. This is the time for which the Error Box Message is displayed before that the default action is taken. You can select 4 timeout :

- No timeout
- 10 seconds
- 20 seconds
- 30 seconds

## Read this

'mcr VB/Error Handler - Tracer Profiler' is a combination of 'VB/Error Handler' and 'VB/Tracer-Profiler'. However, 'mcr VB/Error Handler - Tracer Profiler' is a new product and is not compatible with these older products. 'mcr VB/Error Handler - Tracer Profiler' is more powerful than these older products and can be run under Windows 3.1x and Windows 95.

It can handle projects for VB 3.0, VB 4.0 (16-Bit) and VB 4.0 (32-Bit). The older products can't handle VB 4.0 (32-Bit) projects.

'mcr VB/Error Handler - Tracer Profiler' can handle long filenames under Windows 95, the older products can't do that.

If you're a registered user of 'VB/Error Handler' and/or 'VB/Error Profiler', 'mcr VB/Error Handler - Tracer Profiler' is free for you.

You must simply send me an e-mail with your registration ID to receive a license file for 'mcr VB/Error Handler - Tracer Profiler'.

Select the default action when the timeout has occurred.

You can select 2 actions :

RETRY after timeout has occurred

CANCEL after timeout has occurred



Select the online display if you want to see  
an online form displayed when your application run.  
You can select 2 options :

Yes

No

Click this check box if you want the checking of existing "On [Local] Error {Goto | Resume} ..." . If this check box is checked and if a routine have an existing "On [Local] Error {Goto | Resume} ...", the error management is not added.

Click this check box if you want the adding or the removing of the tracer-profiler in the selected project.

This list box display all modules founden in your project.  
In the 32-Bit version, VBEHTP32 take care of long filenames.

Display the current progress in your project  
and the current routine in the current module.

Select 'Add'

if you want to add the management  
of the error and/or the tracer-profiler.

Select 'Remove'

if you want to add the management  
of the error and/or the tracer-profiler.

Select 'Close' to exit.

# Other products

## Basis products :

### 1) [TIME TO WIN \(VB 3.0 or VB 4.0 \(16-Bit\)\)](#)

This product is a powerfull 16-Bit DLL with more than 640 routines for VB 3.0 and VB 4.0 (16-Bit) application.  
You can register thru CompuServe SWREG #4045 for \$61.00  
You can download a demo called TIME2WIN.ZIP for VB 3.0 and T2WIN-16.ZIP for VB 4.0 (16-Bit), either in MSBASIC and VBPJ forum.

### 2) [TIME TO WIN \(VB 4.0 \(32-Bit\)\)](#)

This product is a powerfull 32-Bit DLL with more than 635 routines for VB 3.0 and VB 4.0 (16-Bit) application.  
You can register thru CompuServe SWREG #7516 for \$52.00  
You can download a demo called T2WIN-32.ZIP for VB 4.0 (32-Bit), either in MSBASIC and VBPJ forum.

### 3) [TIME TO WIN for PowerBuilder 4.0](#)

This product is a powerfull 16-Bit DLL with more than 250 routines for PowerBuilder 4.0 application.  
You can register thru CompuServe SWREG #9095 for \$38.00  
You can download a demo called T2WPB-16.ZIP for PowerBuilder, in POWERBUILDER forum.

### 4) [TIME TO WIN for MS Office 95](#)

This product is a powerfull 32-Bit DLL with more than 200 routines for Access 95, Excel 95 and Word 95.  
You can register thru CompuServe SWREG #10355 for \$25.00  
You can download a demo called T2WOFFIC.ZIP for Access 7.0, in MSACCESS forum.

### 5) [mcr VB/Error Handler - Tracer Profiler](#)

This product is a powerfull product for adding/removing the management of errors and tracer-profiler for project under VB 3.0, VB 4.0 (16-Bit) and VB 4.0 (32-Bit).  
You can register thru CompuServe SWREG #4380 for \$25.00  
You can download a demo called MCVBEHTP.ZIP for the languages, either in MSBASIC and VBPJ forum.

### 6) [MC SECURITY for VB 4.0 \(16/32 Bit\)](#)

This product is a powerfull 16/32-Bit DLL with more than 10 routines for VB 4.0 (16/32 Bit) application.  
This product cover many aspect of how to protect your application.  
You can register thru CompuServe SWREG #8536 for \$10.00  
You can download a demo called MCSECUR.ZIP for VB 4.0 (16/32 Bit), either in MSBASIC and VBPJ forum.

## Update products :

### 1) [Update TIME TO WIN \(VB 3.0 or VB 4.0 \(16-Bit\)\) -> TIME TO WIN 32-Bit \(VB 4.0 \(32-Bit\)\)](#)

This product is an update for registered user of 'TIME TO WIN' which want register the 'TIME TO WIN (32-Bit)'.  
You can register thru CompuServe SWREG #7517 for \$29.00  
You can download a demo called T2WIN-32.ZIP for VB 4.0 (32-Bit), either in MSBASIC and VBPJ forum.

## Special price for registered user :

### 1) [If you're a registered user of 'TIME TO WIN' or 'TIME TO WIN \(32-Bit\)](#)

You receive a special price for 'mcr VB/Error Handler - Tracer Profiler' under VB 3.0, VB 4.0 (16-Bit) and VB 4.0 (32-Bit).  
You can register thru CompuServe SWREG #4379 for \$16.00

You can download a demo called MCVBEHTP.ZIP for the languages, either in MSBASIC and VBPI forum.





